



2014

02	Stubai Prime Park
03	Impressions 2013
04	2014 Stubai Prime Park
05	The Prime Line
06	Setup
09	Framework conditions
10	Media
11	Packages

Stubai Prime Park



Concept

Conceptualized by freeski network, the Stubai Prime Park Sessions are a top level on-snow training facility for professional freeskiers and snowboarders.

Drawing from our own experience as former athletes, coaches and team managers, it is our goal to provide a perfect training environment that supports all the ingredients to aid athlete progression. These framework conditions include travel and accommodation, provision of off-snow activities and dry land training facilities, as well as stress free transportation to the hill.

Most importantly, the Stubai Prime Park provides a terrain park unlike anywhere else at this time of the year. Together with our years of experience and partnership with Europe's top shape company, Schneestern, the features are planned and constructed with utmost perfectionism. Additionally, the parks south-sided terrain and daily winched landings ensure maximum safety, and the shape crew is constantly available to quickly react to athletes needs, ideas and improvements for the park. Altogether, these factors are enhanced by the unique atmosphere that is generated when world class snowboarders and freeskiers gather to feed of each other enthusiasm and push their skills in the safest and best possible environment.

Impressions 2013

Facts and figures

67
12
1

Snowboarders and Freeskiers
Nations
Training facility



2014 Stubai Prime Park

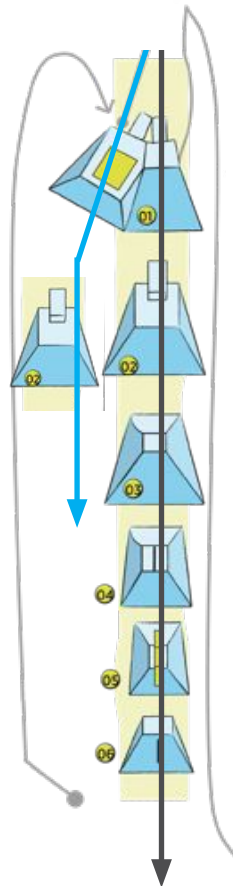
2014 Prime Line

3 jump obstacles

Jump dimensions 21m, 19m, 12m

Optimised rider transportation

Exclusive / non-public



2014 Stubai Zoo

Pro Line in perfect shape

Daily groomed in the morning

Jump dimensions (18m, 16m, 14m)

Extended Rail Line

Open for public

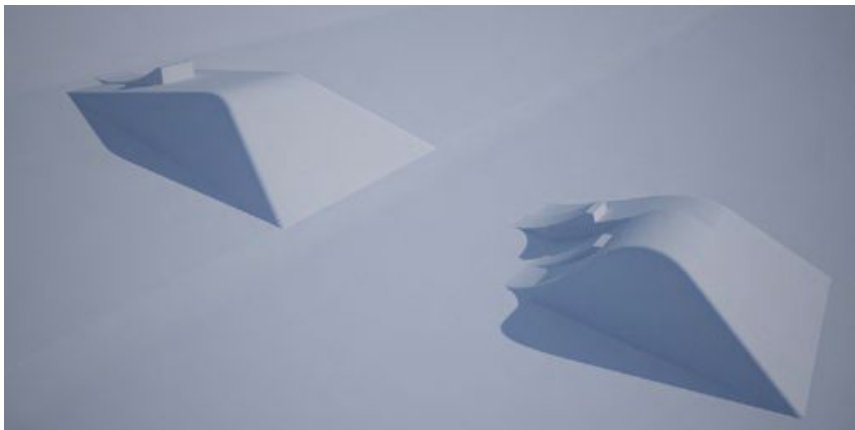
Introducing the Prime Line



Prime Line

Over the course of winter 2014 a new jump line has been created and tested (see photo).

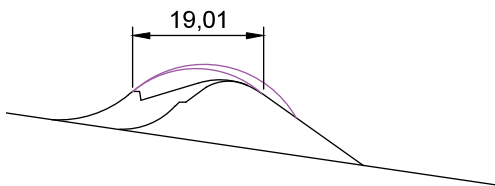
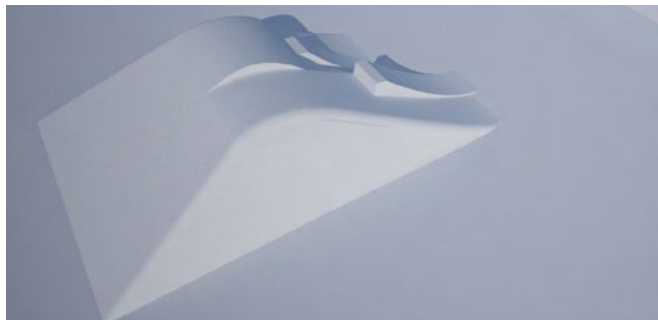
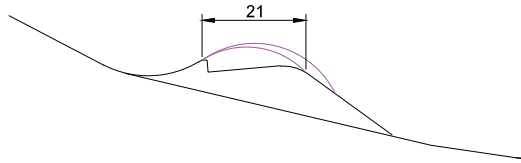
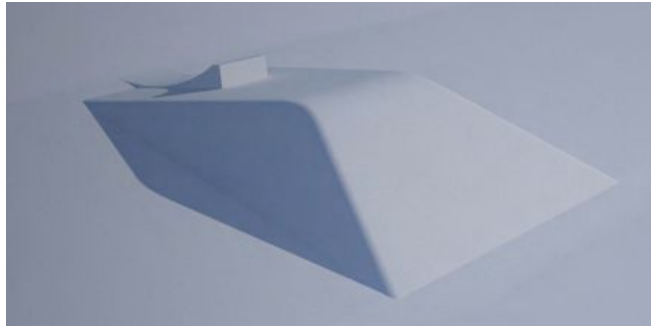
This setup, located next to the Stubai Zoo pro-line will be available exclusively to Prime Park customers, and consists of three progressive jump features whose size, shape and quality are outstanding, especially at that time of the year.



The course consists of two main obstacles and three different jump options. Transportation for athletes is conducted via snowcat shuttles.

Depending on the demand, there is an opportunity for a bagjump option to be integrated as a additional feature of the course. The exact location/construction is depending on the snow conditions and will be communicated as soon as ground works have begun.

Setup Details



Jump 1

The trick buster kicker: Dimensions and distances are balanced between those of classical slopestyle setups and the proportions of a (film) shooting obstacle. This combination will ensure high performance as well as maximum safety.

Table: 21m
Stepdown: 1.2m
Sweetspot: 24m
Takeoff: 32-35°

Jump 2

This roller jump ensures minimum impact at maximum airtime and allows safe progression for all athletes.

Table: 19m
StepUp: 1m
Sweetspot: 23m
Takeoff: 38-40°

Setup Details



Jump 3

Jump 3 is a construction unlike anything in a normal terrain park. This "step-up and over" construction allows athletes to land with minimum impacts and speed, while maintaining significant airtime resulting of a steep takeoff. Altogether, a perfect tool for women and young athletes to learn the bigger tricks or established riders to challenge themselves with new and experimental rotations.

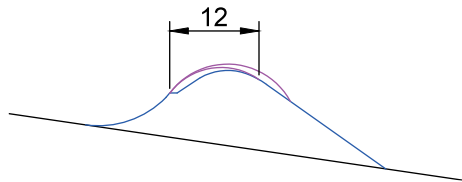


Table: 12m
StepUp: 3,1m
Sweetspot: 14-15m
Takeoff: 55°

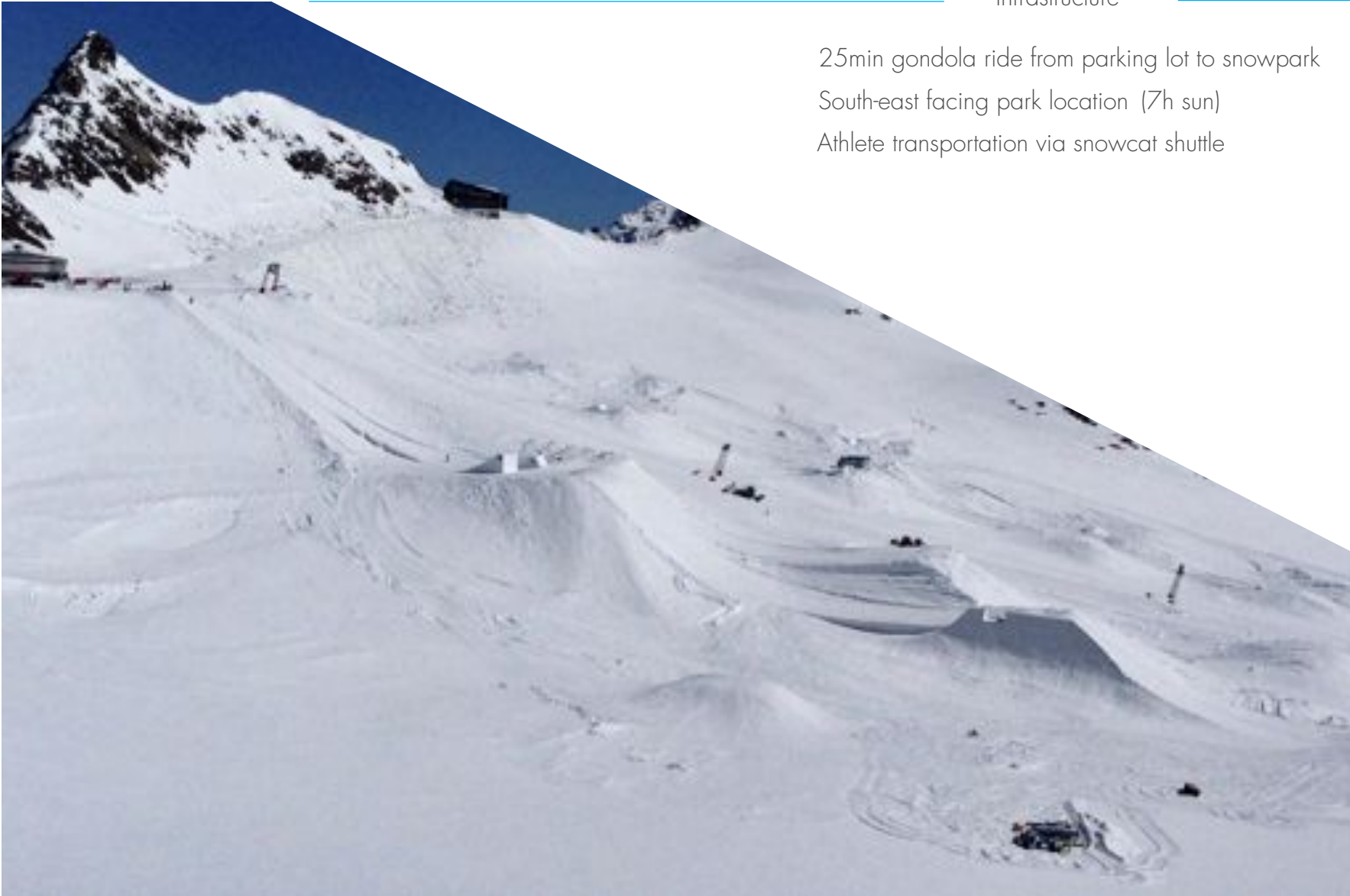
Rails

The 2014 Rail Line is part of the public Pro Line and is going to be modified and constructed according to athletes' feedback of Prime Park 2013.

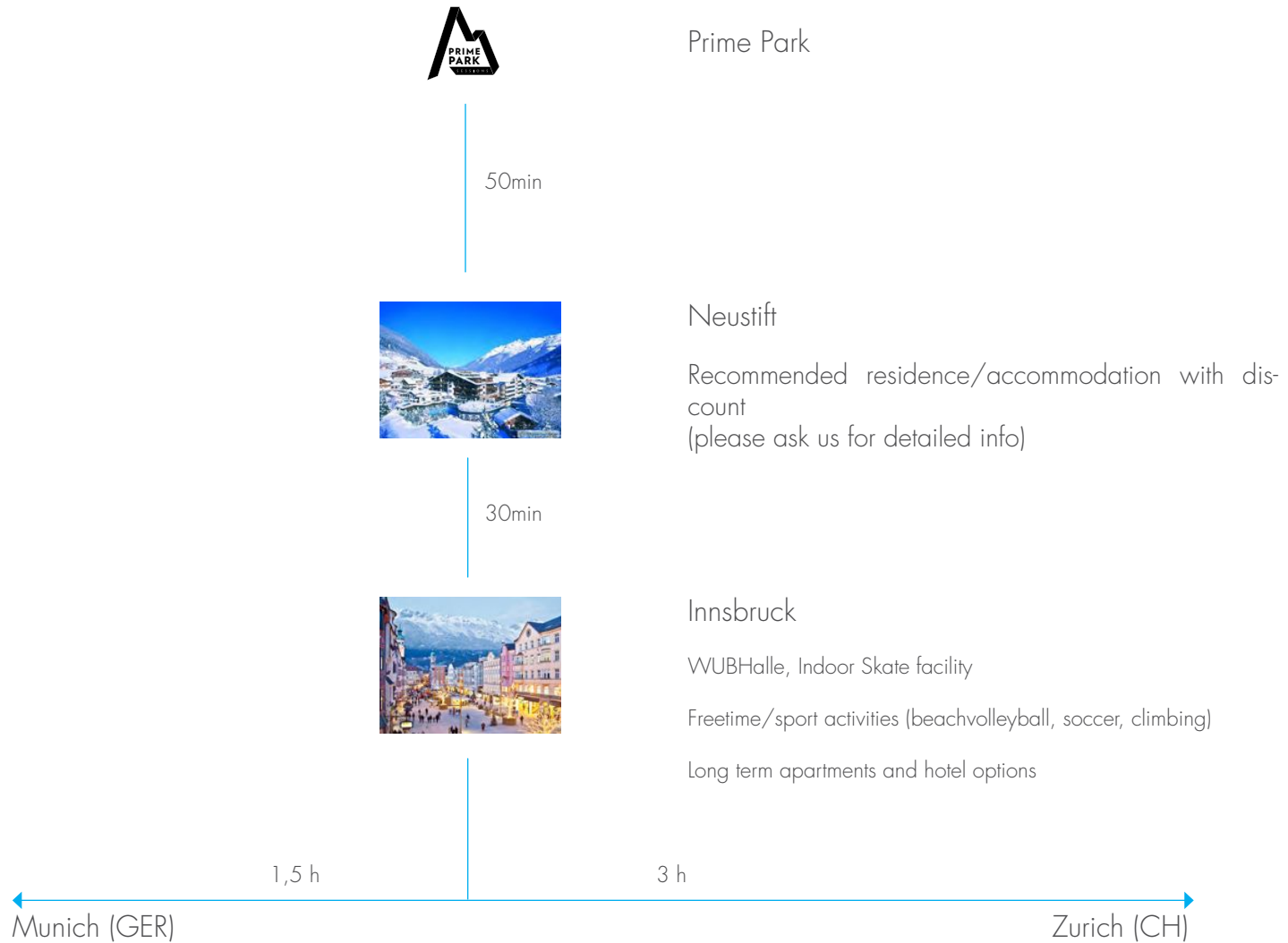
Setup Details

Infrastructure

25min gondola ride from parking lot to snowpark
South-east facing park location (7h sun)
Athlete transportation via snowcat shuttle



Framework conditions



Content production

Step 1

The Prime Park Media Team produces footage on a daily basis/cover as much action as possible

Step 2

Highlights (single tricks or lines) to be provided to the respective athletes and/or team within 36 hours for own, online based distribution purposes.

Step 3

In addition, clips/shots will be regularly published on Prime Park's own platform(s)

Step 4

Footage can be provided to each team within 30 days past the session.

Packages

- Session 1: 20th October - 2nd November
- Session 2: 3rd November - 16th November
- Session 3: 17th November - 1st December **!!! NEW !!!**

Package includes

Liftticket

Access/Transportation Prime Line 10:00-14:30

Access WUBHalle

Gym

<i>Price/Session</i> (excl. VAT)	Athlete	EU	2000,-
	Staff	EU	0,-

* Due to the special circumstances of the new session 3, we can offer a dayrate of 380EU/athlete excluding the ticket



freeski network GmbH | Menhoferstr.39 | D-86920 Denklingen

Contact

Tobi Reindl
tobi.reindl@freeski-network.com
+43 699 17080144

Daniel Schießl
daniel.schiessl@freeski-network.com
+43 699 18194675

More

[*www.freeski-network.com*](http://www.freeski-network.com)

(click)